



**BRIN**  
BADAN RISET  
DAN INOVASI NASIONAL



# TingALi Elder Care: The Integrated AI-Video to the Living Elder Care Technology

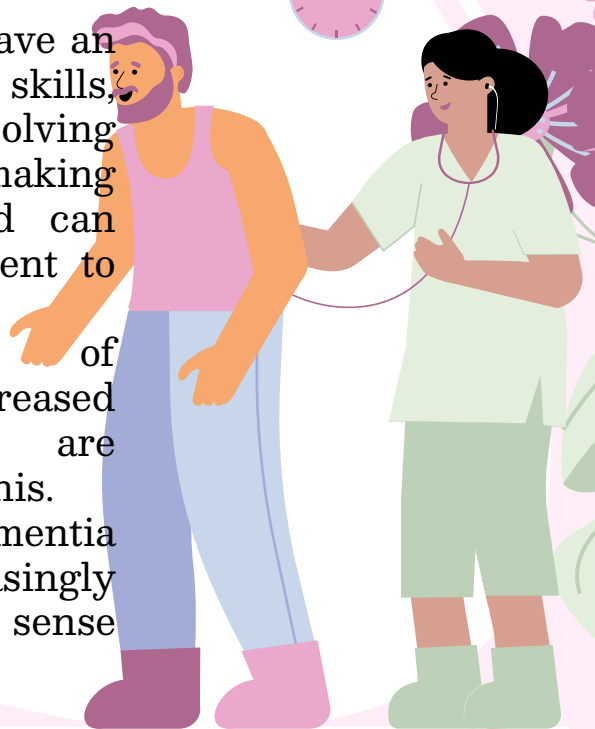
**Risnandar, Ph.D.**

**[risnandar@brin.go.id](mailto:risnandar@brin.go.id), [risnandartelyu@telkomuniversity.ac.id](mailto:risnandartelyu@telkomuniversity.ac.id)**

**The Research Center for Artificial Intelligence and Cybersecurity-  
The National Research and Innovation Agency (BRIN)  
School of Computing, Telkom University, Bandung  
Republic of Indonesia**

# Background

- ❑ Around 29 million Indonesians are categorized as elderly (12% Total Indonesian Population).
- ❑ Social, physical, and mental obstacles can hinder someone's ability to live alone as they grow older.
- ❑ Needs alternative solutions for eldercare including professional caregiving services, assisted living facilities, and residential nursing homes.
- ❑ Need the advanced technology like AI which is combined with the medical technology.
- ❑ Mental impairments can have an impact on the language skills, attention, problem-solving abilities, and memory making daily tasks difficult, and can range from mild impairment to detrimental deficits.
- ❑ Frustration, loss of independence, and increased dependence on others are possible consequences of this.
- ❑ The progression of dementia makes it increasingly challenging to maintain a sense of regularity and routine.





BRIN  
BADAN RISET  
DAN INOVASI NASIONAL



# Idea and Concept



## TARGET

Elderly People which  
Dementia



## S & T

The TingALi Elder Care  
Technology: Wearables  
and Ambient Devices



## Implementation

Real-time the Integrated AI  
and Video Technologies



## Application

Identify: patients in  
distress, potential falls, or  
other critical incidents



## Effects

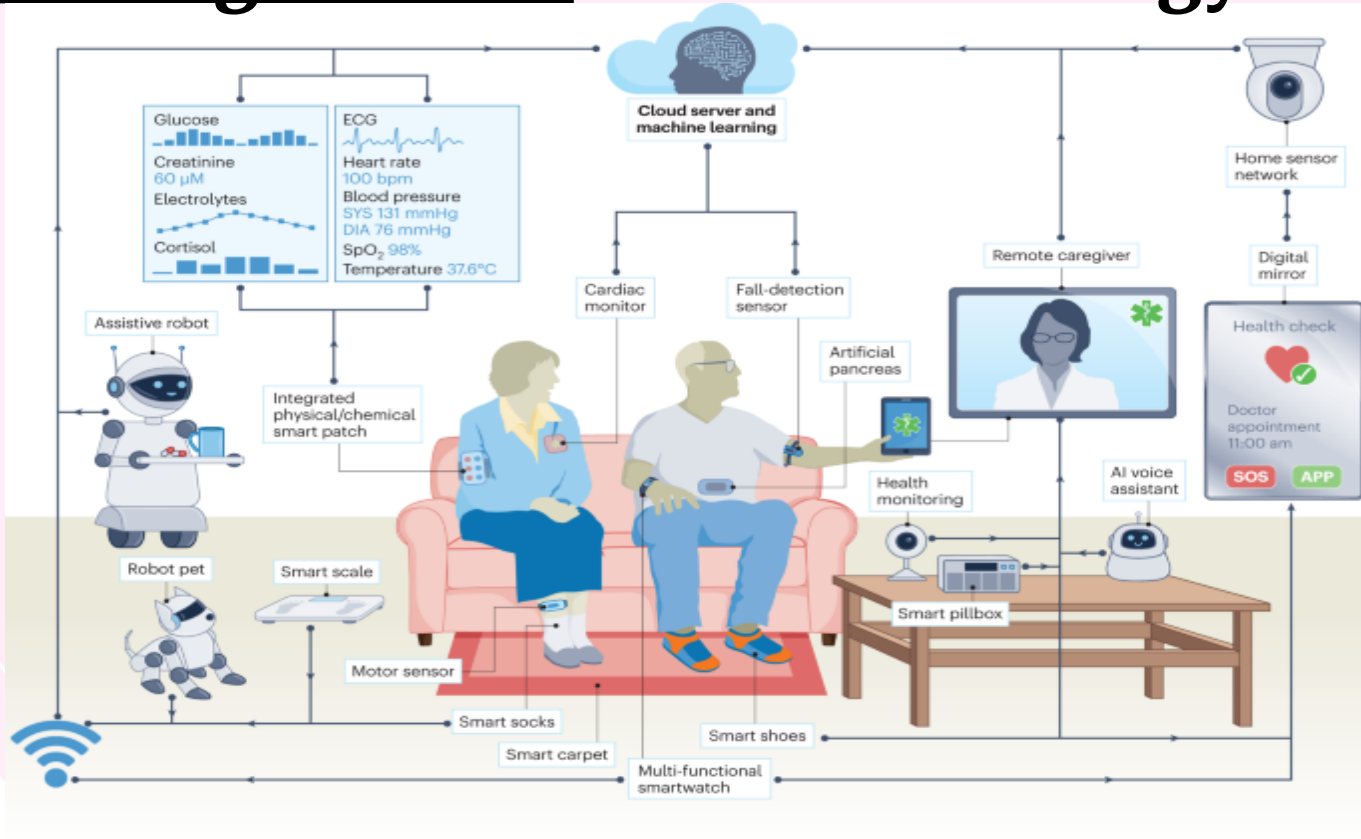
Improving the overall  
well-being and efficiency  
of elderly people, while  
also improving safety



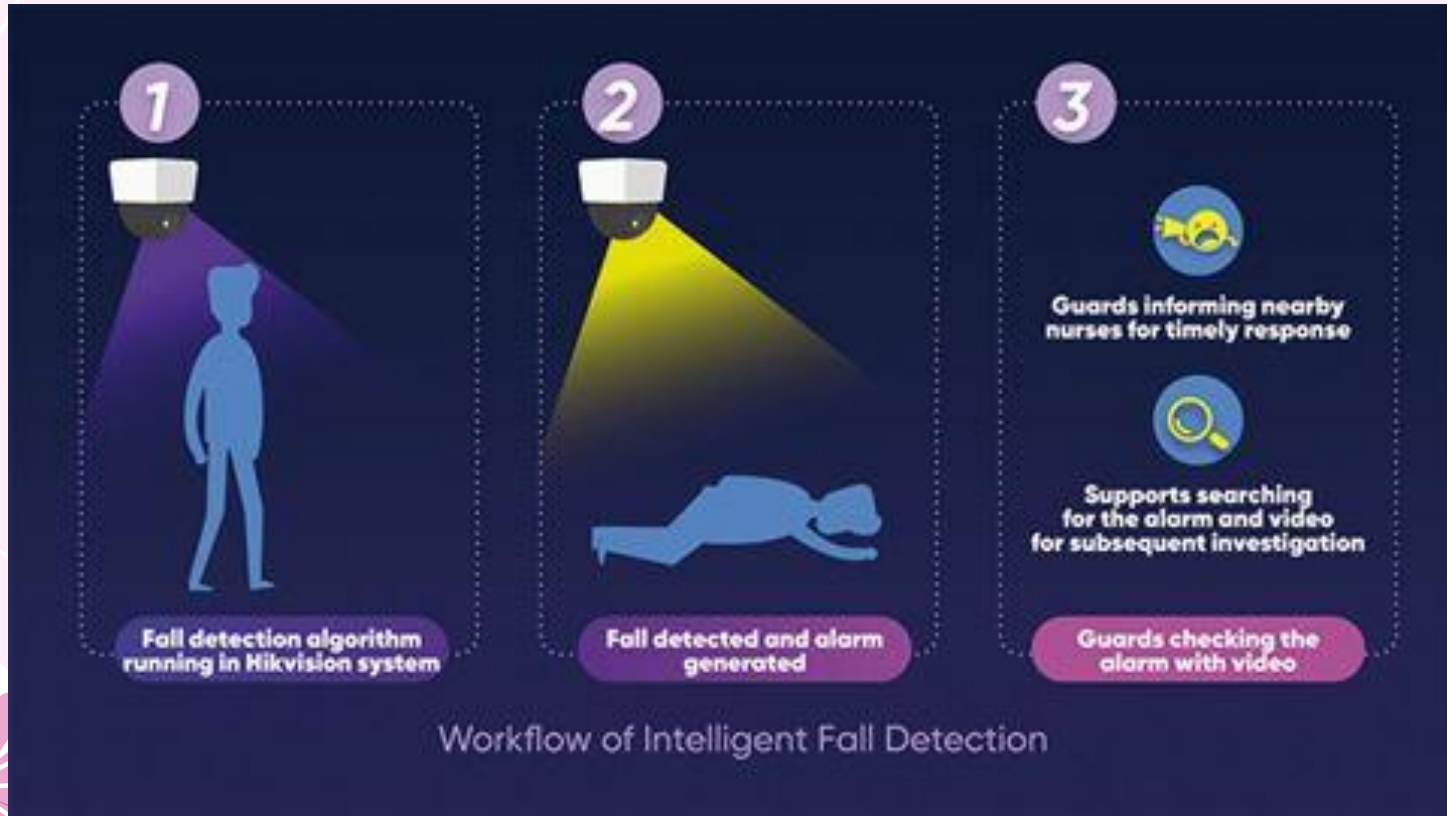
## Features

Not only can extend life, but  
enhancing, and guaranteeing that  
are lived with completeness and  
independence of elderly people.

# The TingALi Elder Care Technology



# Output (1)



# Output (2)





**BRIN**  
BADAN RISET  
DAN INOVASI NASIONAL



# Thanks!

Do you have any questions?

[risnandar@brin.go.id](mailto:risnandar@brin.go.id) | [risnandartelyu@telkomuniversity.ac.id](mailto:risnandartelyu@telkomuniversity.ac.id) | +62-8121-8866-439

**Nfn Risnandar**



**risnandarlipi**



**Nfn Risnandar Ph.D.**